

# Splashtop for students

You will be receiving an invitation by email.

Please accept the invitation from the administrator so you can create your Splashtop account.



[splashtop@lcieducation.com](mailto:splashtop@lcieducation.com) vous a invité à utiliser Splashtop.

Avec Splashtop, vous pourrez accéder à vos ordinateurs depuis n'importe quel autre ordinateur ou appareil mobile, de n'importe où!

Il vous suffit de suivre ces 3 étapes simples:

1. [Acceptez l'invitation de votre administrateur.](#)
2. Sur les ordinateurs ou les appareils mobiles dont vous souhaitez vous éloigner, installez [Splashtop Business app](#) gratuitement et connectez-vous.
3. Après vous être connecté, vous verrez tous les ordinateurs auxquels votre administrateur vous a accordé l'accès. Connectez-vous simplement en cliquant sur le bouton "Connecter" dans l'application Splashtop Business. Si vous ne voyez aucun ordinateur, veuillez demander à votre administrateur de vous aider à configurer les ordinateurs auxquels vous souhaitez vous connecter à distance.

- L'équipe Splashtop


Fill out each respective areas with first name, email address and password.

To create your account, click *Create*.

Create Splashtop Account

Passwords must include:

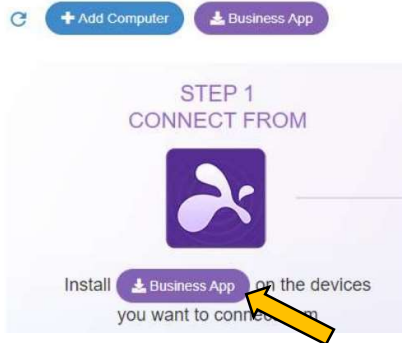
- at least 8 characters.
- at least 1 lowercase letter, 1 uppercase letter and 1 number.
- no commonly used words.

I'm not a robot 

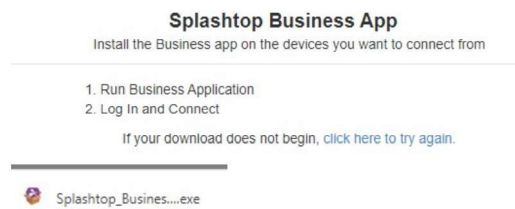
I agree to the Splashtop Terms of Service and Privacy Policy.

At this stage, Splashtop Business installer will appear.

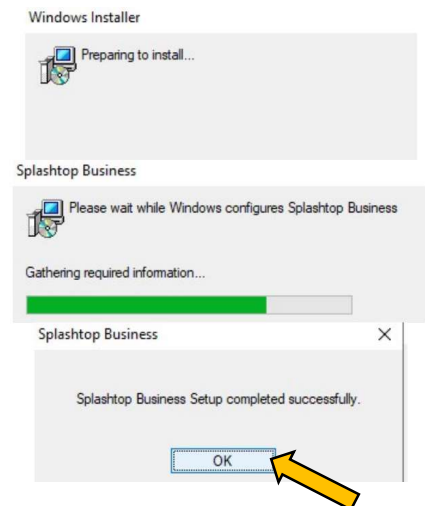
Click on *Business App*.



The download confirmation appears like this.

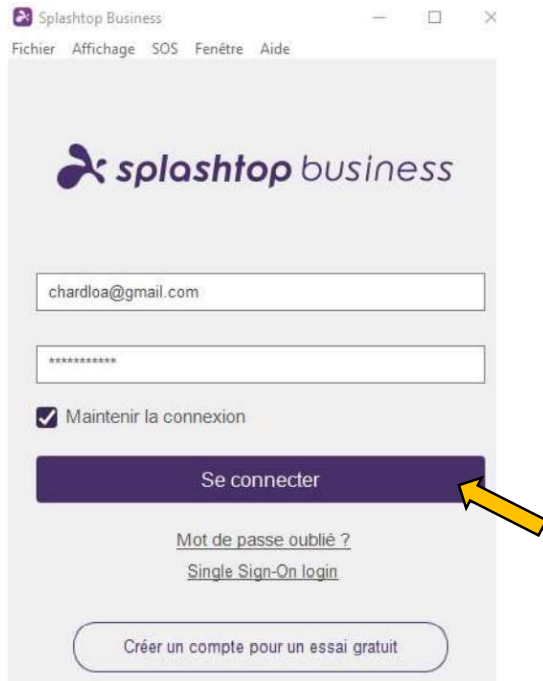


Make sure to click on *OK* once the installation completes.



Once the application opens, connect with your account. Click *Connect*.

**Warning:** Do not click on Create a trial account.



At this stage, please validate your email address and click *OK*.





You will receive a confirmation email, click on *Authenticate this device*.



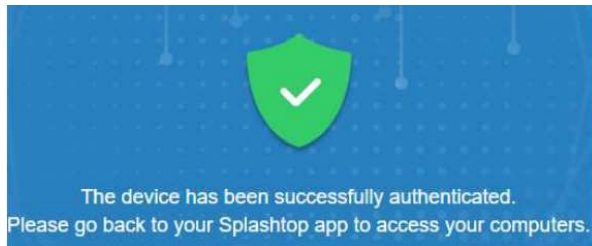
The Splashtop ID ([chardloa@gmail.com](mailto:chardloa@gmail.com)) was used to sign in from a new location.

Please authenticate this device within 2 hours of receiving this email.

[Authenticate this device.](#)



You are now authenticated.



Open Splashtop Business application and you will see the computers that you are allowed to connect to.

Ex :

